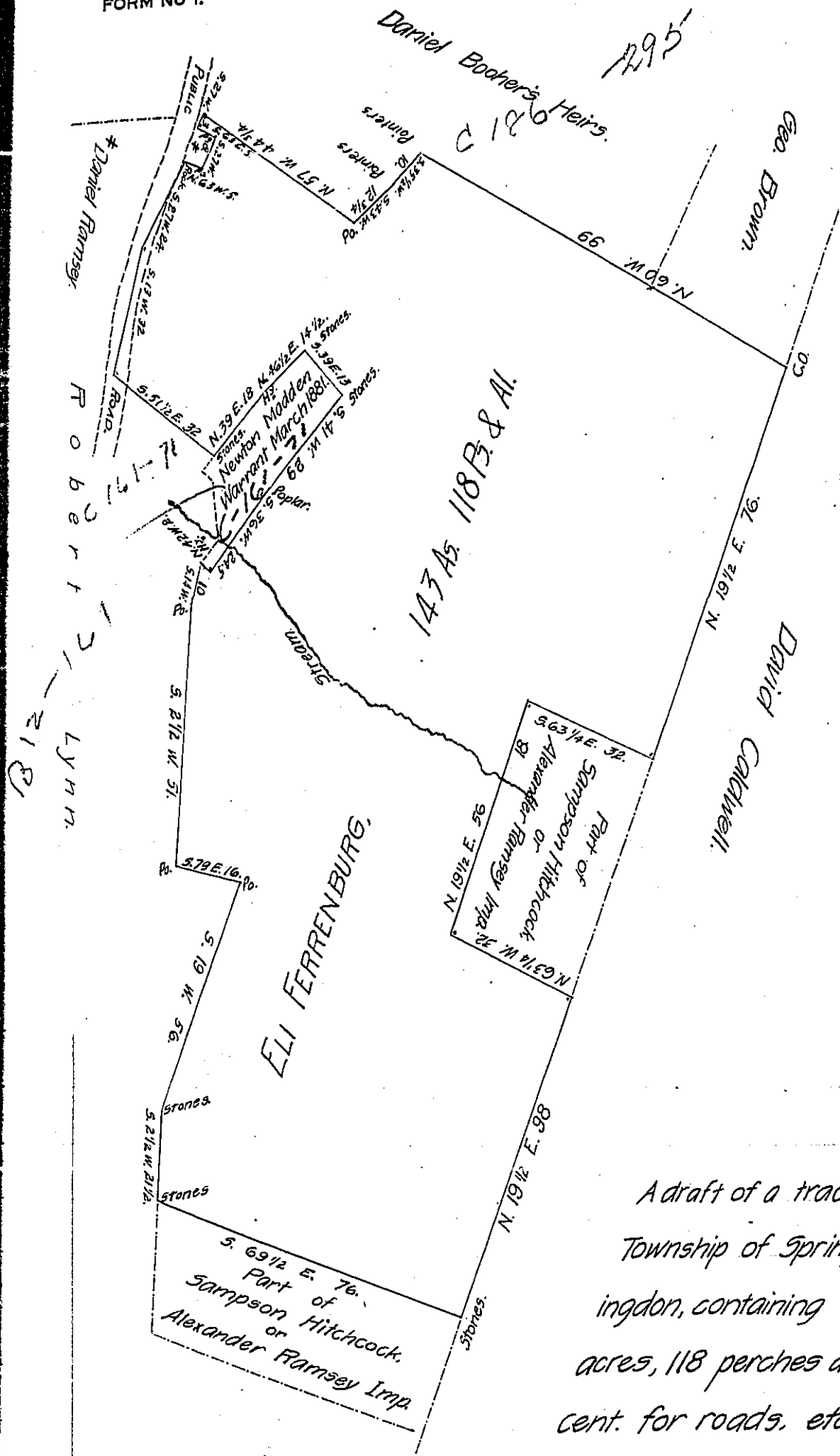


FORM NO 1.



A draft of a tract of land situated in the Township of Springfield and County of Huntingdon, containing one hundred and forty three acres, 118 perches and allowance of six per cent. for roads, etc. Surveyed the third

day of March, 1896, in pursuance of a warrant granted to Eli Ferrenburg, dated the 21st day of March, 1893.

H. M. Swope,
County Surveyor.

James W. Latta,
~~To Thomas J. Stewart, Esq.,~~
Secretary of Internal Affairs.

Returned March 25, 1896.

IN TESTIMONY that the above is a copy of the original remaining on file in the Department of Internal Affairs of Pennsylvania, made conformably to an Act of Assembly approved the 16th day of February, 1833, I have hereunto set my Hand and caused the Seal of said Department to be affixed at Harrisburg, this Fifth day of February, 1908.

Henry Horvick
Secretary of Internal Affairs.